

# INSTALLATION INSTRUCTIONS



## LOCKING SPINDLE NUT KIT (TOYOTA)

### KIT CONTENTS



**TGI-307260**






## RECOMMENDED TOOLS

Jack, and Jack Stands  
Lug Wrench  
Snap ring pliers  
Flat Head screw driver  
Metric Socket and Ratchet Set  
54 MM Spindle Socket TG P/N 140157-1-KIT  
2.5 MM allen wrench  
Pull Scale, TG P/N 170004-KIT

## CAUTION

1. Read all instructions completely and carefully before you begin.
2. Check to make sure the kit is complete and that no parts are missing (refer to the Kit Contents image on the first page of these instructions). If anything is missing, please contact Trail-Gear at 559.252.4950.
3. Park vehicle on a clean, dry, flat, level surface and block the tires so the vehicle can not roll in either direction.
4. This product is for off-road use only. It is recommended that the installation steps below be performed by a competent mechanic. Buyers and users of this product hereby expressly assume all risks associated with the installation and use of this product.
5. This installation is typical for most Toyota solid front axles. Some vehicles may vary. If necessary, refer to the proper Factory Service Manual for the year and model of your vehicle.

	<b>NOTICE</b> Read instructions completely before installing this product. Refer back to the instructions frequently during installation.		<b>CAUTION</b> Flying Object Hazard. Fluid Splash Hazard. Wear safety glasses at all times when working on vehicle.
 <b>WARNING:</b> Cancer and Reproductive Harm - <a href="http://www.P65Warnings.ca.gov">www.P65Warnings.ca.gov</a>			

## LOCKING SPINDLE NUT INSTRUCTIONS

### STEP 1

Jack up the Axle and place on jack stands. If you're not installing new bearings measure pre-load, and note for re-assembly.

### STEP 2

Unlock hub, and remove locking hub cap



### STEP 3

Remove snap ring.



### STEP 4

Remove hub body, and wheel



### STEP 5

With a large flat head screw driver bend back star washer to unlock nut.



### STEP 6

Remove spindle nut, and star washer





# INSTALLATION INSTRUCTIONS



## STEP 7

Remove thrust washer



## STEP 8

Install new thrust washer



## STEP 9

Install TG spindle nut, using the 54 MM spindle socket. If installing new wheel bearings set preload on wheel bearings as called out in the factory service manual. If re-using existing bearings install to previously measured load.



## STEP 10

Install TG spindle washer



## STEP 11

Install M3 lock washers, and socket head screws where holes in the spindle nut line up with spindle washer. They will be 180° apart. If necessary tighten nut slightly to improve alignment. **DO NOT LOOSEN TO IMPROVE ALIGNMENT.**



## STEP 12

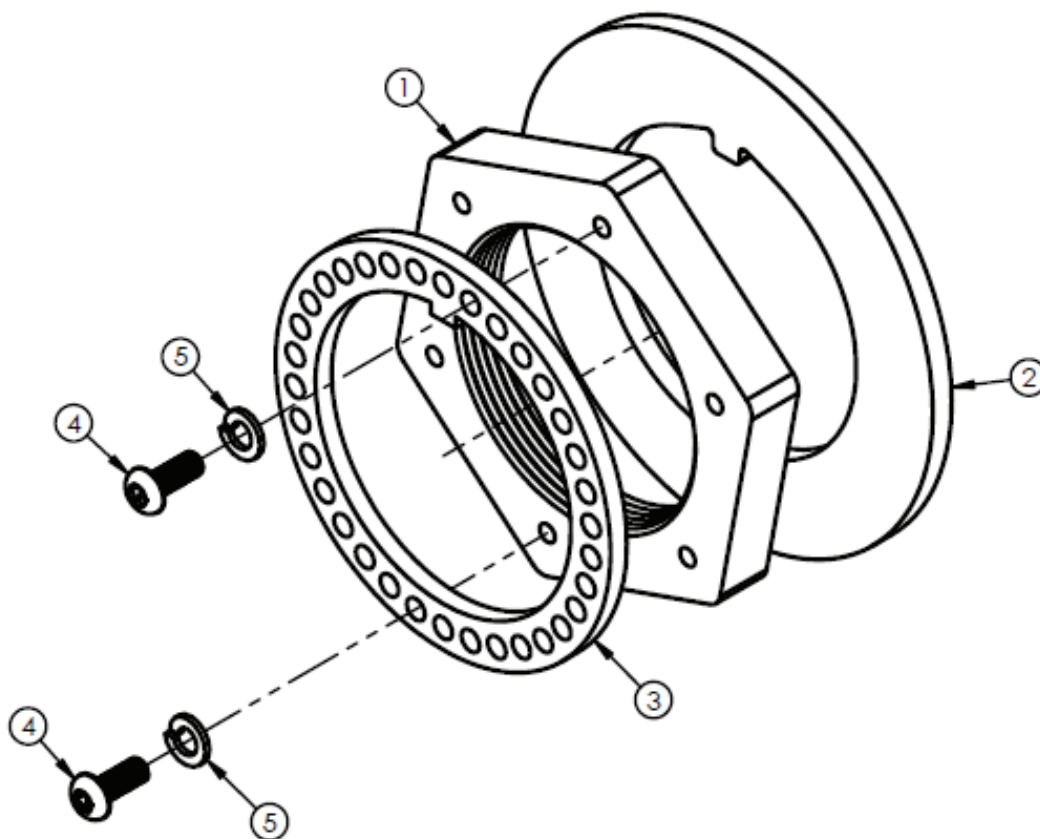
Reassemble the hub in reverse order. Verify that the spindle nut locking screws do not interfere with the locking hub.

## STEP 12

Take the vehicle for a short test drive. Make sure the locking hubs work in both the locked and unlocked positions. If the locking hubs do not work in both positions, or if there are any unusual noises, disassemble the hub and repeat Steps 1-12.



## SERVICE PARTS:



ITEM NO.	PART NUMBER	DESCRIPTION	QTY.
1	300518-HARDENED	NUT, SPINDLE, LOCKING, TOYOTA	1
2	300506	THRUST WASHER, TOYOTA	1
3	300517	RETAINER, LOCKING WASHER, TOYOTA	1
4	307242	SCREW, M3-0.5 X 10mm	2
5	300521	WASHER, LOCK, SPLIT, M3, STEEL, ZINC	2

Quantities shown represent parts per spindle, not necessarily parts per kit.