

Instructions Created by an:



**Automotive
Service
Excellence**
MASTER AUTO TECHNICIAN



Sidekick/Tracker 4door Fender Flares (SKU# KEB-FF-4D)

Installation Instructions



CAUTION: Safety glasses should be worn at all times when working with vehicles and related tools and equipment.



**FOR ADDITIONAL COPIES OF THESE
AND OTHER INSTRUCTIONS GO TO:**

www.lowrangeoffroad.com and click on the
"INSTRUCTIONS" tab.

Suggested Tools:

- Torx® Screwdriver: T-20 (Included)
- 1/8" Drill Bit (Included)
- Permanent Marker (white preferred)
- Electric Hand Drill
- Utility Knife
- Diagonal Cutting Pliers
- Masking Tape (No-residue) Optional
- Center Punch (Optional)
- Hammer (Optional)

Important Notice:

There are many approaches and techniques that can be used to install these fender flares. These techniques will vary depending on your skills and the tools you have available. The approach taken in these instructions are what we found to work best for us. You may have other ideas that can work equally well or even better. These instructions are intended to be used as a guideline.

However, having said that, we strongly encourage you read these instructions through completely before beginning the project. And that you pay particular attention to the **Notes, Tech Tips** and **Cautions**. These are areas where we will be warning you of potential problem areas. Thanks for letting us help you with this installation.

Once more thing! Using power tools to install the screws is a bit risky. Applying too much torque can easily strip out the hole in the fender, damage the fender flares or even strip the screw. Even though we used a power torx® screwdriver in these instructions we recommend using the manual screwdriver that is supplied with the kit to install the screws.

Trimming the Flares to Fit Side Molding



Step 1

If your vehicle does not have side molding, skip ahead to **Step 7**.

Step 2

Beginning with the Left Front fender, hold the fender flare in the position you would like it to end up. It should fit snug under the fender and the ends positioned according to your best judgement. (See Next three Tech Tips)



Tech Tip 2A

We aligned the front with the fender as shown.



Tech Tip 2B

The rear ended up about 1/2" above rocker molding.



Tech Tip 2C

Position the fender flare high enough so that the second screw from the bottom is not being installed through the door molding and that the notch-out you will need to cutting is not near the screw indentation.



Step 3

Once you have the fender flare where you want it, make a mark on the fender flare indicating where the top of the door molding notch-out will be made.



Step 4

Position the fender flare as shown (at the end of the door molding) and mark the fender flare showing where the notch-out will be made.



Step 5

Carefully cut away material from the fender flare where the door molding will fit.



Tech Tip 5 CAUTION!!

It is best to cut a little less than you think will be needed at first, test fit the fender flare and then whittle away more material if needed.



Step 6

Once the molding notch-out is satisfactory, move on to the next step.



Marking and Drilling the Holes



Step 7

If you do not have an assistant you can tape the fender flares to the vehicle using a good quality non-residue masking tape.



Step 8

If you have someone to assist you, as we did, have them hold the fender flare in place.



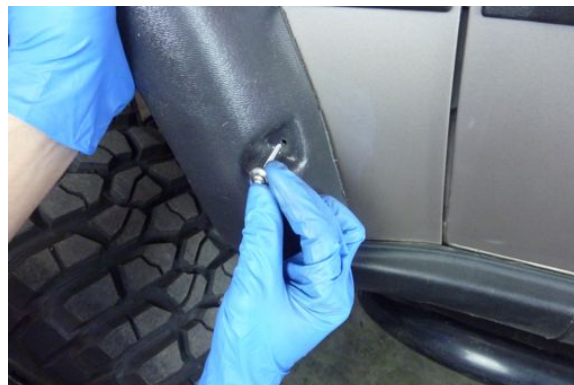
Step 9

Using the supplied 1/8" drill bit, drill the first hole using the fender flare as your guide.

Alternate Method: A safer, more accurate way to insure the holes are located correctly would be:

1. Mark the holes with the drill (or nail) in all 7 locations.
2. Remove the fender flare.
3. Center punch each hole location.
4. Drill all 7 holes with 1/8" drill.
5. Reposition the fender flare.

This takes a little more time but the holes are more likely to be located correctly.



Step 10

Position the 1st screw as shown.

Note: This screw should be a short screw. (See Tech Tip 10 "Screw size and placement illustration")





Tech Tip 10

Screw size and placement illustration.



Step 11

Start the first screw, but leave it loose for now.

Caution: We used a power driver, but we recommend you use the supplied screw driver if you are a “first time” installer. The power driver can easily over torque the screw which can strip out the fender, damage the screw threads and or damage the fender flare.



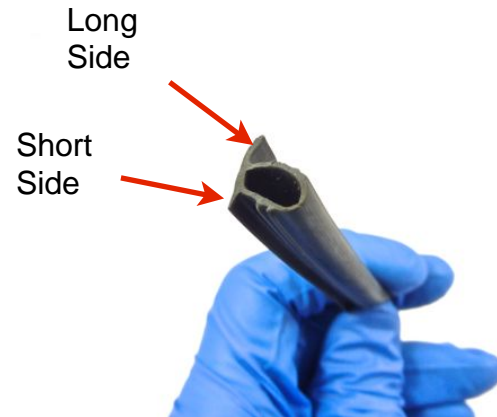
Step 12

Repeat **Steps 9 through 11** on the other 6 screw locations.

Note: Leave all the screws loose for now. Also, be sure to follow the illustration in **Tech Tip 10** to insure proper screw length.



Important Notice: The weather stripping is optional. Because it is a bit tedious and the flares look pretty good with out, some have chosen to simply leave them out. It is your choice. If you choose to leave out the weather stripping, skip all the steps associated with weather stripping.

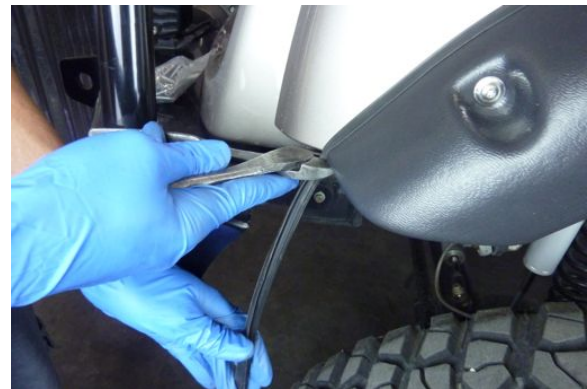


Step 13

Once all the screws are in place and loose, slide the supplied weather stripping between the fender flare and the fender as shown.

Tech Tip 13A

Although it is optional, we found the weather stripping worked best when installed with the long side toward the fender and the short side toward the fender flare.



Tech Tip 13B

Weather stripping can also be installed by pressing it in place as shown.

Step 14

Once the weather stripping is in place, trim the excess using diagonal cutting pliers or a utility knife.





Step 15

Repeat Steps 13 on the lower portion of the fender flare.



Step 16

Once the weather stripping is in place snug the lower screw as shown.

Caution: Be careful not to over-tighten these screws.



Step 17

Double check the fit of the weather stripping on the top section and snug the other 6 screws.



Tech Tip 17

Sometimes the fit and finish of the weather stripping can be improved by loosening or tightening the screws.

Installing the Left Rear Fender Flare



L = Long Screws
S = Short Screws

Background Information

The rear fender flares are a bit more challenging because they are installed in two pieces which need to line up with each other. Additionally, the front section is attached to the door and must be positioned such that the door can be opened and closed with out obstruction. We recommend you leave 1/2 to 3/4 of an inch of gap between the front and rear pieces.

Background Information

This shows where the long and short screws are to be installed.

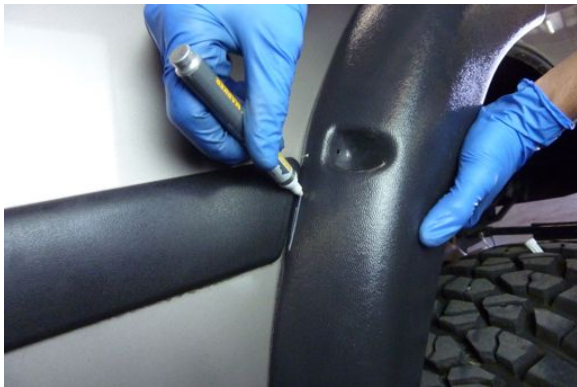


Installing the Front Section of the Left Rear Fender Flare



Step 18

Position the front section of the rear fender flare as shown. Be sure it has clearance at the bottom near the rocker molding. Also, it is very important that there is 1/4" to 3/8" clearance between the bottom of the fender flare and the wheel well. We used our finger tips to estimate this space. This should allow the door to open and close without obstruction.



Step 20

Reposition the fender flare on the back edge of the door molding as shown. Using a white marker, draw a mark where the notch-out should be cut.



Step 19

Once you have the fender flare positioned properly, mark the top of where the molding notch will be made, using a permanent marker.



Step 21

Using a utility knife, whittle out the section using the line made in Step 20 as a guide.

Note: Keep well away from the line at first and test fit often. If you cut too much material away it leaves a gap and it will not look as good.





Tech Tip 21

Test fit often to avoid removing too much material.



Step 22

Once the fender is positioned properly, have an assistant (or use masking tape) hold the fender flare and drill the first hole as before.

Note: Again you could use the safer more accurate approach explained in **Step 11**.



Step 23

Install the first screw but leave it loose for now.

Caution: When this screw is fully tightened it may extend through the door and be visible on the other side when the door is opened. It may even interfere with the rubber door seal. If this happens, you will want to grind the tip of the screw, making it shorter or swap this longer screw with one of the shorter screws.



Step 24

Repeat Steps 22 and 23 on the second and third screw.



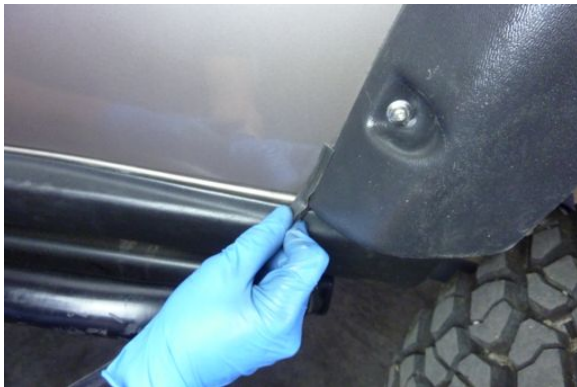
Step 25

Fit the upper section of weather stripping as shown.



Step 26

Cut the excess using diagonal cutting pliers or the utility knife.



Step 27

Fit the lower section of weather stripping and cut to fit.



Step 28

Once the weather stripping is in place, snug the screws.

Caution: Do not over torque. They just need to be snug.





Step 29

Check the front section of the rear fender flare for proper fit as you open and close the door. It may be necessary to trim a little from the bottom corner to insure an interference free fit.

Installing the Rear Section of the Left Rear Fender Flare



Step 30

Position the rear section as shown. There should be about 1/2" to 3/4" gap between the two pieces and at about the same height as the front piece.



Step 30 Continued

Of course this is totally up to you but we recommend that the rear of the flare be at about the same height as the rear fender.





Step 31

While holding the fender flare in place, drill the first hole.



Step 32

Position the first screw.



Step 33

Install the first screw, but leave it loose for now.



Step 34

Repeat Steps 31 through 33 on the second and third screws leaving all screws loose.





Step 35

Install the weather stripping.



Step 36

Trim the weather stripping and snug the screws.



We had to install this screw through the door molding.



Step 37

Installing the right rear fender flare is basically the same as the left rear except that you will need be sure the fuel door is not obstructed when opened. Also, we had to install one screw through the door molding. We did not see this as a problem.

Step 38

The right front fender flare is a mirror image of the left front and is installed basically the same.



Congratulations!

You have successfully installed a set of fender flares on a sidekick (or Tracker). We hope these instructions were helpful. If you have suggestions on how we could improve our instructions (or products) please email us at: sales@lowrangeoffroad.com





As always, If you experience any difficulty during the installation of this product please contact Low Range Off-Road Technical Support at 801-805-6644 M-F 7:30am-5:30pm MST. Thank you for purchasing from Low Range Off-Road.



These instructions are designed as a general installation guide. Installation of many Low Range Off-Road products require specialized skills such as metal fabrication, welding and mechanical trouble shooting. If you have any questions or are unsure about how to proceed, please contact our shop at 801-805-6644 or seek help from a competent fabricator. Using fabrication tools such as welders, torches and grinders can cause serious bodily harm and death. Please operate equipment carefully and observe proper safety procedures.

Rock crawling and off-road driving are inherently dangerous activities. Some modifications will adversely affect the on-road handling characteristics of your vehicle. All products sold by Low Range Off-Road are sold for off road use only. Any other use or application is the responsibility of the purchaser and/or user. Some modifications and installation of certain aftermarket parts may under certain circumstances void your original dealer warranty. Modification of your vehicle may create dangerous conditions, which could cause roll-overs resulting in serious bodily injury or death. Buyers and users of these products hereby expressly assume all risks associated with any such modifications and use.

Revised 04/11/14© Copyright 2014 Low Range Off-Road, LC All Rights Reserved

