






951-658-7077 | 5356 E. Pine Ave Fresno, CA 93711



AP-309283 (INSTALLATION INSTRUCTIONS FOR 10+ 4RUNNER ROCK SLIDERS, KITS AP-306641 AND AP-306642)

	NOTICE Read instructions completely before installing this product. Refer back to the instructions frequently during installation.		CAUTION Flying Object Hazard. Fluid Splash Hazard. Wear safety glasses at all times when working on vehicle.
 WARNING: Cancer and Reproductive Harm - www.P65Warnings.ca.gov			



1. If you purchased bare rock sliders, paint or powder coat them to avoid rust once installed.

AP-309283



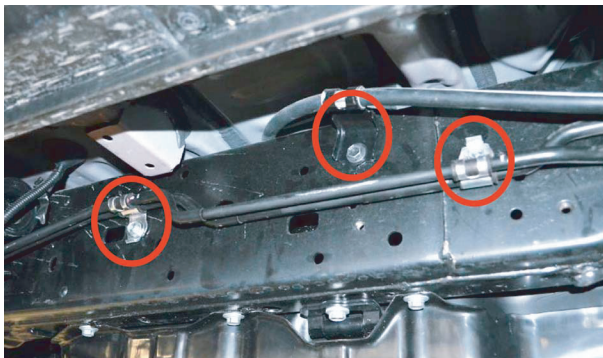
951-658-7077 | 5356 E. Pine Ave Fresno, CA 93711



2. Remove the bolt holding the rear parking brake line from the frame rail and straighten the mounting tab. The original mounting bolt will be replaced with one of the bolts provided with the rock slider kit.



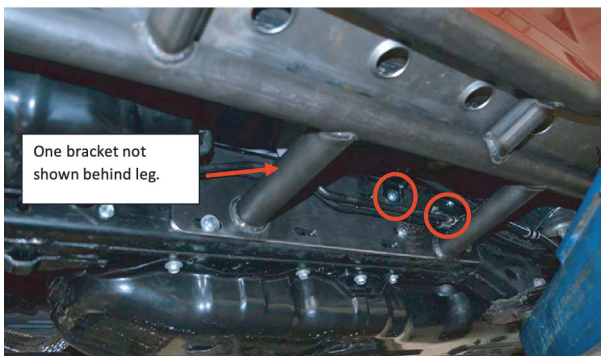
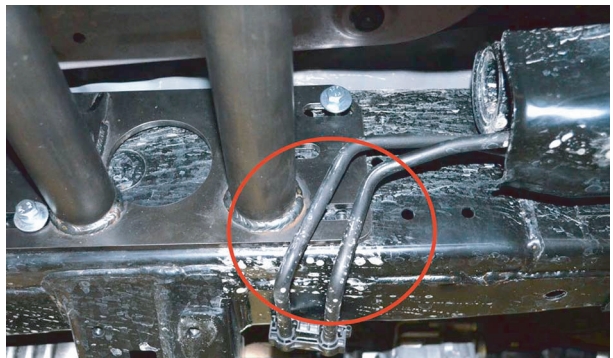
3. If your vehicle is equipped with the KDSS, remove the brackets holding the KDSS lines to the frame and small skid plate protecting the KDSS lines going under the frame.



4. With the help of a jack stand or helper support the rock slider and position it against the frame rail. Note the “kick-out” section of the rock slider goes toward the rear of the vehicle. Align the holes in the slider mounting bracket with the threaded holes in the frame rail. Using the provided hardware, start to thread the bolts into the frame rail. Use (11) bolts to secure the driver side slider and (9) bolts to secure the passenger side slider.



5. Once the rock slider is supported on the frame rail, reinstall any brackets you may have previously taken off on top of the slider mounting bracket. On the driver's side the front mounting plate will go under the KDSS lines. Snug a few of the mounting bolts so the rock slider is pulled against the frame rail but you can still adjust the position of the slider.



One bracket not shown behind leg.



6. Adjust the position of the slider forward and backwards to ensure no KDSS lines are contacting the slider and the slider is in the desired position. Once the slider is aligned, torque all the mounting bolts to 29 ft-lb.
7. Repeat the same process on the other side of the vehicle.
8. It is recommended to check the bolts after the first 100 miles of driving to ensure that nothing has come loose.