



951-658-7077 | 5356 E. Pine Ave Fresno, CA 93711



CHEVY COLORADO AND GMC CANYON ROCK SLIDER INSTALLATION INSTRUCTIONS (AP-308201, AP-308202, AP-308203, AP-308204)

	NOTICE Read instructions completely before installing this product. Refer back to the instructions frequently during installation.		CAUTION Flying Object Hazard. Fluid Splash Hazard. Wear safety glasses at all times when working on vehicle.
---	--	--	--

	WARNING: Cancer and Reproductive Harm - www.P65Warnings.ca.gov
---	---



Passenger Side Installation

1. Insert square nut plate into slot on crossbar and center as shown.



AP-309106-INS

2. Begin to position the slider with the use of clamps. You can install the short M12 bolt with the nut plate to help with positioning. The sliders protruding flange should be centered in the frames crossbar.



3. Install the rear 3 bolts with the rectangular nut plates finger tight.



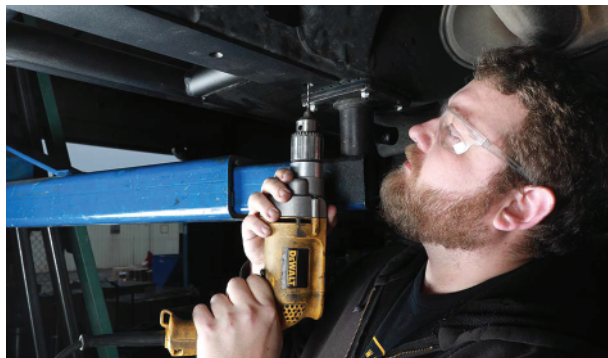
4. Install the 2 long M12 Bolts with the double nut plate. The flanged ends will be touching the frame with the short flange toward the front of the vehicle.



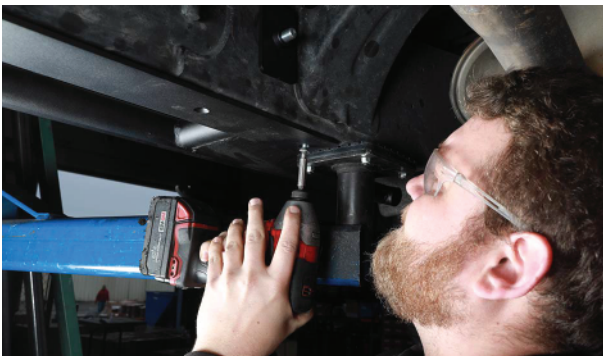
5. Be sure the slider's bottom edge is flush with the frame. Then tighten all bolts.



6. Using a center punch and a hammer, mark the center of the counter sink holes on the frame. To make the install easier we suggest drilling a small pilot hole on the same marking.



7. Install the self-drilling flat head screws with a drill and a Phillips #2 bit until it's flush with the surface.



Drivers Side Installation

1. First measure and note down how much thread is exposed past the nut holding the e-brake. Attach a clamp to the square side of the threaded rod to assist with disassembling.



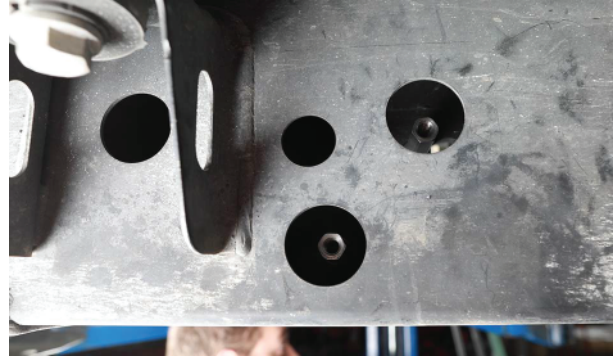
2. Using a 10mm wrench, remove the nut holding the e-brake assembly together. Save the nut and bracket for re-installation. Move the brake lines out of the way to allow for slider installation.



3. Using a 13mm socket and an extension remove the two nuts in the larger frame holes.



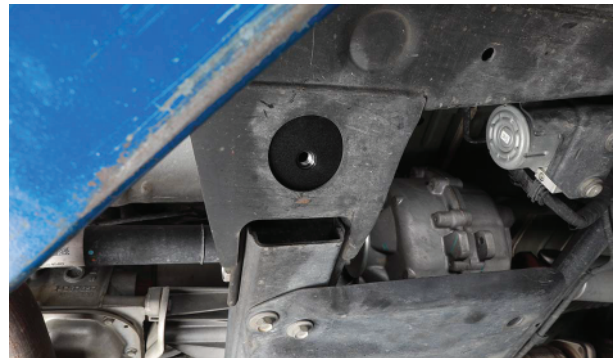
4. On those same studs install the extended length coupler nuts.



5. Remove the 2 bolts from frame toward the front of the frame as shown. You will have to pull the wiring harnesses clips off the frame in order to get access to the top bolt.



6. Install the square nut plate into slot on crossbar and center as shown.



7. Begin to position the slider with the use of clamps. You can install the short M12 bolt with the nut plate to help with positioning. The sliders protruding flange should be centered in the frames crossbar.



8. Using the welded nut plate as shown, insert the nut side of the plate to the frame hole so it will be facing away from the fuel tank. Fasten with the M12-1.75x95 bolt with flat and lock washer.



9. In the inside of the frame near the middle of the slider; there are two plastic clips that hold brake lines that will need to be removed. Insert the welded nut plate into the hole with the nut on the inside of the frame as shown. You may need to use a screwdriver to move the brake lines in order to install the plate. Fasten with the M12-1.75x95 bolt with flat and lock washer.



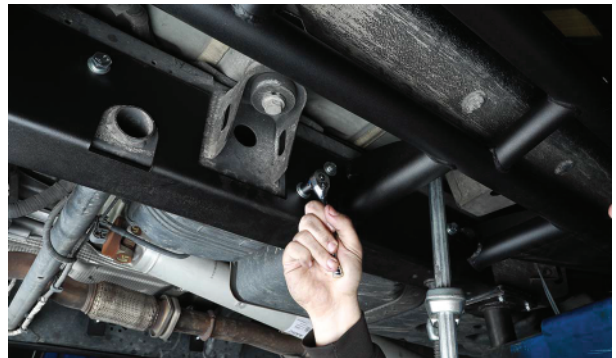
10. Using the shorter M8 bolts, lock and flat washers, install them on the coupling nuts as shown.



11. When installing the M8 bolts you will use a lock washer and the wedge washer. When installed correctly the thick side of the wedge washer will be on the right side as shown.



12. Be sure the slider's bottom edge is flush with the frame. Then tighten all bolts.



13. Using a center punch and a hammer, mark the center of the counter sink holes on the frame. To make the install easier we suggest drilling a small pilot hole on the same marking.



14. Install the self-drilling flat head screws with a drill and a Phillips #2 bit until it's flush with the surface.



15. Feed the E-brake lines through the gussets as shown. Re-install the bracket and tighten the nut down until you reach the amount of exposed thread that was there prior to install.

