

TUNDRA REAR BUMPER INSTALLATION

	<p>NOTICE</p> <p>Read instructions completely before installing this product. Refer back to the instructions frequently during installation.</p>
--	---

	<p>CAUTION</p> <p>Flying Object Hazard. Fluid Splash Hazard.</p> <p>Wear safety glasses at all times when working on vehicle.</p>
--	--

	<p>WARNING: Cancer and Reproductive Harm - www.P65Warnings.ca.gov</p>
--	--

NOTE: This bumper will not accommodate blind spot monitor.

1. Remove license plate.



2. Remove center plastic pin.



3. Remove 8 lower plastic pins and bolts on either side of the bumper.

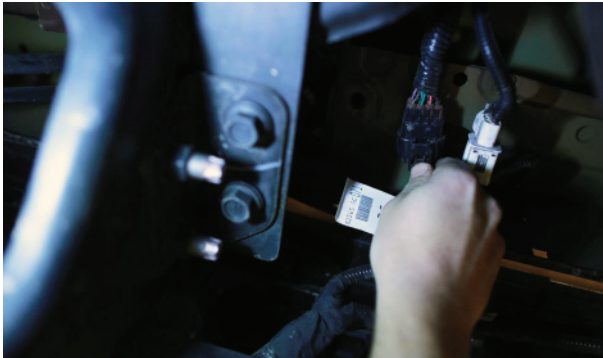


4. Unplug trailer wiring.



AP-307764-INS

5. Unplugs the light and sensor harness.



6. Remove the two center parking sensors.



7. Remove the license plate lights from their housing.



8. Pull up on bumper center cap starting from the outside, it is very hard to remove this part of the bumper without breaking the clips. Depending on model there may be wiring attached to this center piece and may need to be removed.



9. Remove 12 mm bolts from the bumper wings.



10. Remove the plastic clips from the wings. Repeat on opposite side.



11. Pull up and remove the plastic side wing caps. Repeat on opposite side.



12. Remove 2 pins and one bolt underneath. Repeat on opposite side.



13. Remove proximity sensor from the bumper side caps.

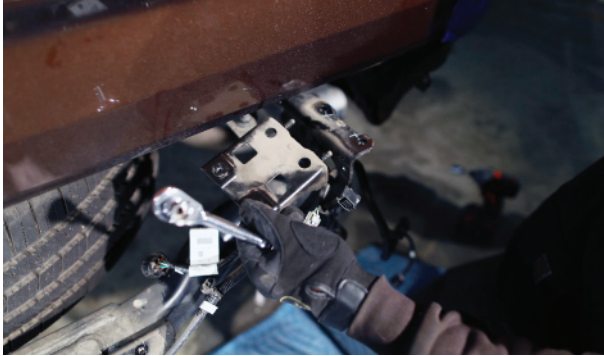
14. Remove the remainder of bolts hold bumper side substructure and remove. Repeat on opposite side.



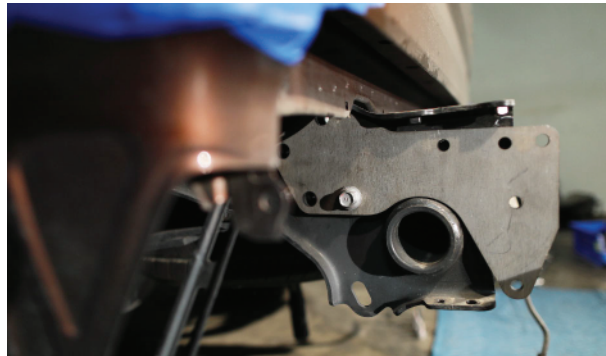
15. Remove center mount.



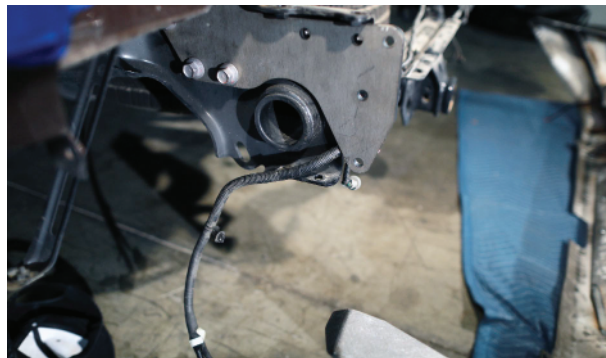
16. Remove gusset as shown. Repeat on opposite side.



17. Install bumper mounts as shown using factory hardware and 2 5/16" bolts per side.



18. Route wiring as shown.

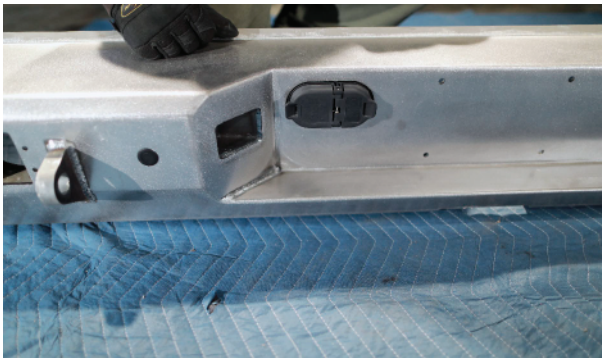


19. Install parking sensors, license plate and license plate lights into bumper.



20. When installing trailer wiring connector pry up on metal clip from the rear until it snaps into place. We used a flat head screwdriver for this. The trailer wiring mount on the bumper is thicker than factory so this may take some effort.

21. Slide bumper over the mounts.





22. Install the 3/8" hardware. 3 per side.



23. Install lower two mounting bolts, you will reuse factory hardware for this.



24. Reattach and secure all wiring using zip ties or similar.